

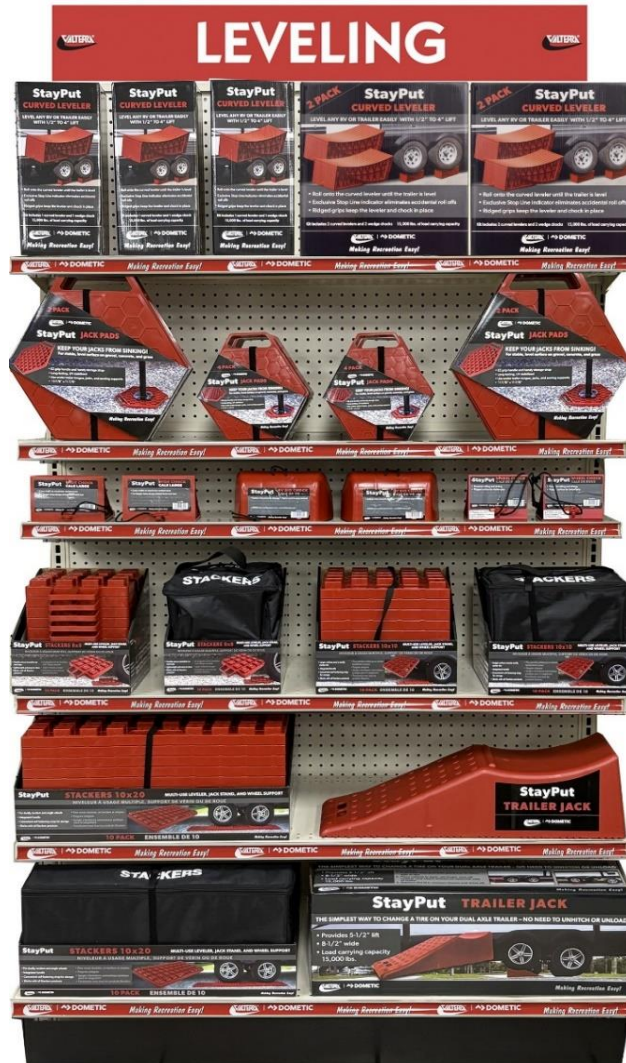
Part Number

Qty in POG

PG955

4' Leveling POG

| | | |
|----------|---|---|
| F2011 | Leveling POG Sign | 1 |
| M0702 | Shelf Strip | 6 |
| A10-0902 | StayPut Curved Leveler, Boxed | 4 |
| A10-0903 | StayPut Curved Leveler, 2 pack, Boxed | 2 |
| A10-0926 | StayPut Jack Pad, Large, 2 pack, Wrap Card | 4 |
| A10-0925 | StayPut Jack Pad, Small, 4 Pack, Wrap Card | 6 |
| A10-0915 | StayPut Wide Chock, Bulk | 6 |
| A10-0914 | Big Chock, Bulk | 4 |
| A10-0908 | Wheel Chock, Red, Bulk | 6 |
| A10-0918 | Stackers, 8 x 8, 10Pk, Boxed | 2 |
| A10-0920 | Stackers, 8 x 8, 10Pk With Bag, Boxed | 1 |
| A10-0927 | StayPut Stackers, 10 x 10, 10 pack, Boxed | 2 |
| A10-0929 | StayPut Stackers, 10 x 10, 10 pack w/Bag, Boxed | 1 |
| A10-0928 | StayPut Stackers, 10 x 20, 10 pack, Boxed | 2 |
| A10-0905 | StayPut Trailer Jack, Boxed | 2 |
| A10-0930 | StayPut Stackers, 10 x 20, 10 pack w/Bag, Boxed | 1 |



Part Number

Qty in POG

PG956 3' End Cap Leveling POG

| | | |
|----------|---|----|
| F2011 | Leveling POG Sign | 1 |
| M0702 | Shelf Strip | 5 |
| A10-0902 | StayPut Curved Leveler, Boxed | 3 |
| A10-0903 | StayPut Curved Leveler, 2 pack, Boxed | 2 |
| A10-0915 | StayPut Wide Chock, Bulk | 10 |
| A10-0908 | Wheel Chock, Red, Bulk | 14 |
| A10-0920 | Stackers, 8 x 8, 10Pk With Bag, Boxed | 2 |
| A10-0918 | Stackers, 8 x 8, 10Pk, Boxed | 1 |
| A10-0930 | StayPut Stackers, 10 x 20, 10 pack w/Bag, Boxed | 2 |
| A10-0927 | StayPut Stackers, 10 x 10, 10 pack, Boxed | 2 |



Part Number

Qty in POG

| Part Number | Description | Qty in POG |
|-------------|---|------------|
| PG957 | 8' Leveling POG | |
| F2011 | Leveling POG Sign | 2 |
| M0702 | Shelf Strip | 8 |
| A10-0926 | StayPut Jack Pad, Large, 2 pack, Wrap Card | 4 |
| A10-0925 | StayPut Jack Pad, Small, 4 Pack, Wrap Card | 4 |
| A10-0902 | StayPut Curved Leveler, Boxed | 6 |
| A10-0903 | StayPut Curved Leveler, 2 pack, Boxed | 4 |
| A10-0914 | Big Chock, Bulk | 5 |
| A10-0928 | StayPut Stackers, 10 x 20, 10 pack, Boxed | 2 |
| A10-0905 | StayPut Trailer Jack, Boxed | 3 |
| A10-0915 | StayPut Wide Chock, Bulk | 10 |
| A10-0918 | Stackers, 8 x 8, 10Pk, Boxed | 1 |
| A10-0920 | Stackers, 8 x 8, 10Pk With Bag, Boxed | 3 |
| A10-0916 | Stackers, 4Pk, Boxed | 2 |
| A10-0930 | StayPut Stackers, 10 x 20, 10 pack w/Bag, Boxed | 1 |
| A10-0929 | StayPut Stackers, 10 x 10, 10 pack w/Bag, Boxed | 3 |
| A10-0927 | StayPut Stackers, 10 x 10, 10 pack, Boxed | 1 |



Part Number

Qty in POG

| Part Number | 3' Leveling POG | Qty in POG |
|-------------|---|------------|
| F2011 | Leveling POG Sign | 1 |
| M0702 | Shelf Strip | 4 |
| A10-0925 | StayPut Jack Pad, Small, 4 Pack, Wrap Card | 4 |
| A10-0926 | StayPut Jack Pad, Large, 2 pack, Wrap Card | 2 |
| A10-0916 | Stackers, 4Pk, Boxed | 2 |
| A10-0922 | Stackers Chock | 4 |
| A10-0915 | StayPut Wide Chock, Bulk | 6 |
| A10-0908 | Wheel Chock, Red, Bulk | 6 |
| A10-0920 | Stackers, 8 x 8, 10Pk With Bag, Boxed | 3 |
| A10-0918 | Stackers, 8x 8, 10Pk, Boxed | 1 |
| A10-0930 | StayPut Stackers, 10 x 20, 10 pack w/Bag, Boxed | 2 |
| A10-0927 | StayPut Stackers, 10 x 10, 10 pack, Boxed | 2 |



Part Number

Qty in POG

PG930

4' Fresh Water POG

| | | |
|------------|--|---|
| F2001 | Fresh Water POG Sign | 1 |
| M0702 | Shelf Strip | 3 |
| A01-1120VP | Water Regulator, Brass, Carded | 6 |
| A01-1122VP | Water Regulator, High Flow, Carded | 6 |
| A01-2222VP | Water Regulator 90 Degree W/Hose Saver, Carded | 6 |
| A01-1124VP | Water Regulator Gauge Combo, Carded | 3 |
| A01-1117VP | Water Regulator, Adjustable, Brass Carded | 1 |
| W01-9300 | Drinking Water Hose, 5/8" X 25', Blue | 8 |
| W01-9420 | Blue Water Hose 5/8" X 35' | 8 |
| W01-9600 | Drinking Water Hose, 5/8" X 50', Blue | 6 |



Part Number

Qty in POG

PG928 8' Fresh Water POG

| | | |
|------------|--|---|
| F2001 | Fresh Water POG Sign | 2 |
| M0702 | Shelf Strip | 6 |
| W01-8048 | Drinking Water Utility Hose, 1/2" X 4', Blue | 6 |
| A01-1120VP | Water Regulator, Brass, Carded | 4 |
| A01-1122VP | Water Regulator, High Flow, Carded | 4 |
| A01-2222VP | Water Regulator 90 Degree W/Hose Saver, Carded | 4 |
| A01-1124VP | Water Regulator Gauge Combo, Carded | 3 |
| A01-1117VP | Water Regulator, Adjustable, Brass Carded | 2 |
| W01-8120 | Drinking Water Hose, 1/2" X 10', Blue | 8 |
| K88300 | AquaFRESH Performance Freshwater System | 4 |
| W01-8300 | Drinking Water Hose, 1/2" X 25', Blue | 8 |
| W01-9420 | Blue Water Hose 5/8" X 35' | 8 |
| W01-9300 | Drinking Water Hose, 5/8" X 25', Blue | 4 |
| W01-8600 | Drinking Water Hose, 1/2" X 50', Blue | 6 |
| W01-9600 | Drinking Water Hose, 5/8" X 50', Blue | 6 |



Part Number

Qty in POG

PG979 3' Shower Head POG

| | | |
|----------|--|---|
| F2001 | Fresh Water POG Sign | 1 |
| M0702 | Shelf Strip | 1 |
| PF276050 | Airfusion Shower Head Kit Hand Held White | 2 |
| PF276048 | Airfusion Shower Head Kit, Hand Held Chrome | 2 |
| PF276047 | Airfusion Shower Head Kit, Handheld Brushed Nickel | 2 |
| PF276026 | Shower Head Kit Trickle Shut-Off, 60" Hose Black | 2 |
| PF276024 | Shower Head Kit, Trickle Shut-Off 60" Hose, White | 2 |
| PF276045 | Shower Head Kit Trickle Shut-Off 60" Hose Chrome | 2 |
| PF276042 | Airfusion Shower Head Separate Controller White | 2 |
| PF276039 | Airfusion Shower Head Separate Control Brushnickel | 2 |
| PF276040 | Airfusion Shower Head Separate Controller Chrome | 2 |
| PF276036 | Shower Head Handheld Trickle Shut-Off Brush Nickel | 2 |
| PF276052 | Showerhead, 3Function Handheld Spray/Massage White | 2 |
| PF266701 | Exterior Shower Box W/59" Vinyl Hose 1/4Turn Black | 1 |
| PF266201 | Exterior Shower Box W/59" Vinyl Hose 1/4Turn White | 1 |



Part Number

Qty in POG

PG978 4' Shower Head POG

| | | |
|----------|--|---|
| F2001 | Fresh Water POG Sign | 1 |
| M0702 | Shelf Strip | 1 |
| PF276050 | Airfusion Shower Head Kit Hand Held White | 2 |
| PF276048 | Airfusion Shower Head Kit, Hand Held Chrome | 2 |
| PF276047 | Airfusion Shower Head Kit, Handheld Brushed Nickel | 2 |
| PF276042 | Airfusion Shower Head Separate Controller White | 2 |
| PF276039 | Airfusion Shower Head Separate Control Brushnickel | 2 |
| PF276045 | Shower Head Kit Trickle Shut-Off 60" Hose Chrome | 2 |
| PF276024 | Shower Head Kit, Trickle Shut-Off 60" Hose, White | 2 |
| PF276026 | Shower Head Kit Trickle Shut-Off, 60" Hose Black | 2 |
| PF276040 | Airfusion Shower Head Separate Controller Chrome | 2 |
| PF276036 | Shower Head Handheld Trickle Shut-Off Brush Nickel | 2 |
| PF276032 | Hose Handheld Showr 60" Doublehook Stainlesssteel | 3 |
| PF276016 | Hose For Handheld Shower, 60", Vinyl, White Bagged | 3 |
| PF276018 | Hose For Handheld Shower, 60", Vinyl, Black Bagged | 3 |
| PF276015 | Shower Head, Handheld For Ext Shower Box, White | 2 |
| PF276020 | Shower Head, Handheld For Ext Shower Box, Black | 2 |
| PF266201 | Exterior Shower Box W/59" Vinyl Hose 1/4Turn White | 1 |
| PF266701 | Exterior Shower Box W/59" Vinyl Hose 1/4Turn Black | 2 |



Part Number

Qty in POG

PG935

3' E Valve POG

| | | |
|-----------|---|---|
| F2008 | Sanitation POG Sign | 1 |
| M0702 | Shelf Strip | 3 |
| E1013D | E Valve Display | 1 |
| E1003NEVP | E-Valve Electric Waste Valve System w/Switch, 3", No Fittings, Boxed | 2 |
| E1013NEVP | E-Valve Electric Waste Valve System w/2 Switches, 1-1/2" & 3", No Fittings, Boxed | 2 |
| E1003NEVP | E-Valve Electric Waste Valve System w/Switch, 3", No Fittings, Boxed | 2 |
| F02-4350 | Flush King, Boxed | 6 |
| T58 | Twist On Waste Valve, Boxed | 9 |

Harnesses to be added to new POG:

E3076-10 - 10' Harness

E3076-20 20' Harness

